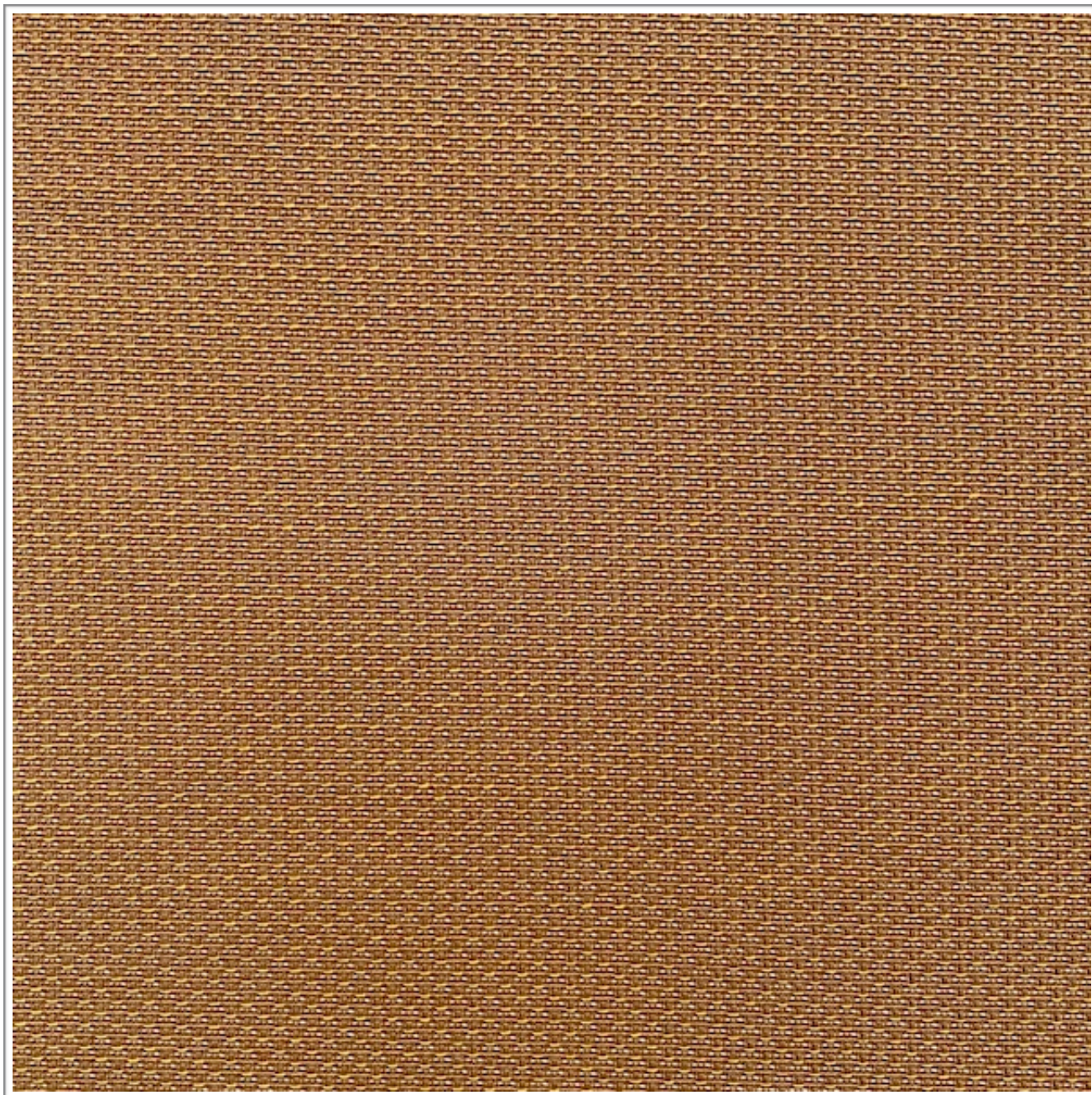


AURA

SPIRIT

Weavers
World



Photographic fabric scans are not colour accurate. Always request actual fabric samples before ordering.

SPECIFICATIONS

Application	Screening
Composition	65% Polyester, 9% Polyprop, 26% Acrylic
Width	142 cm
Mass	310 gm/1m
Pattern Repeat	Plain
Complies To	SABS 1324 Contract Specification

		STANDARD	AURA
Abrasion Resistance			
Colour Fastness			
To Light		6	6
To Rubbing		3	3
To Pilling		3	3
Seam Slippage:	WARP	120N	180N
	WEFT	120N	167N
Tensile Strength:	WARP	200N	400N
	WARP	200N	400N
Cleaning Instructions:	PROFESSIONAL CLEANING		

NOTE: Refer to SABS 726 - This specification calls for a minimum seam of 15mm and 4-5 stitches per cm.