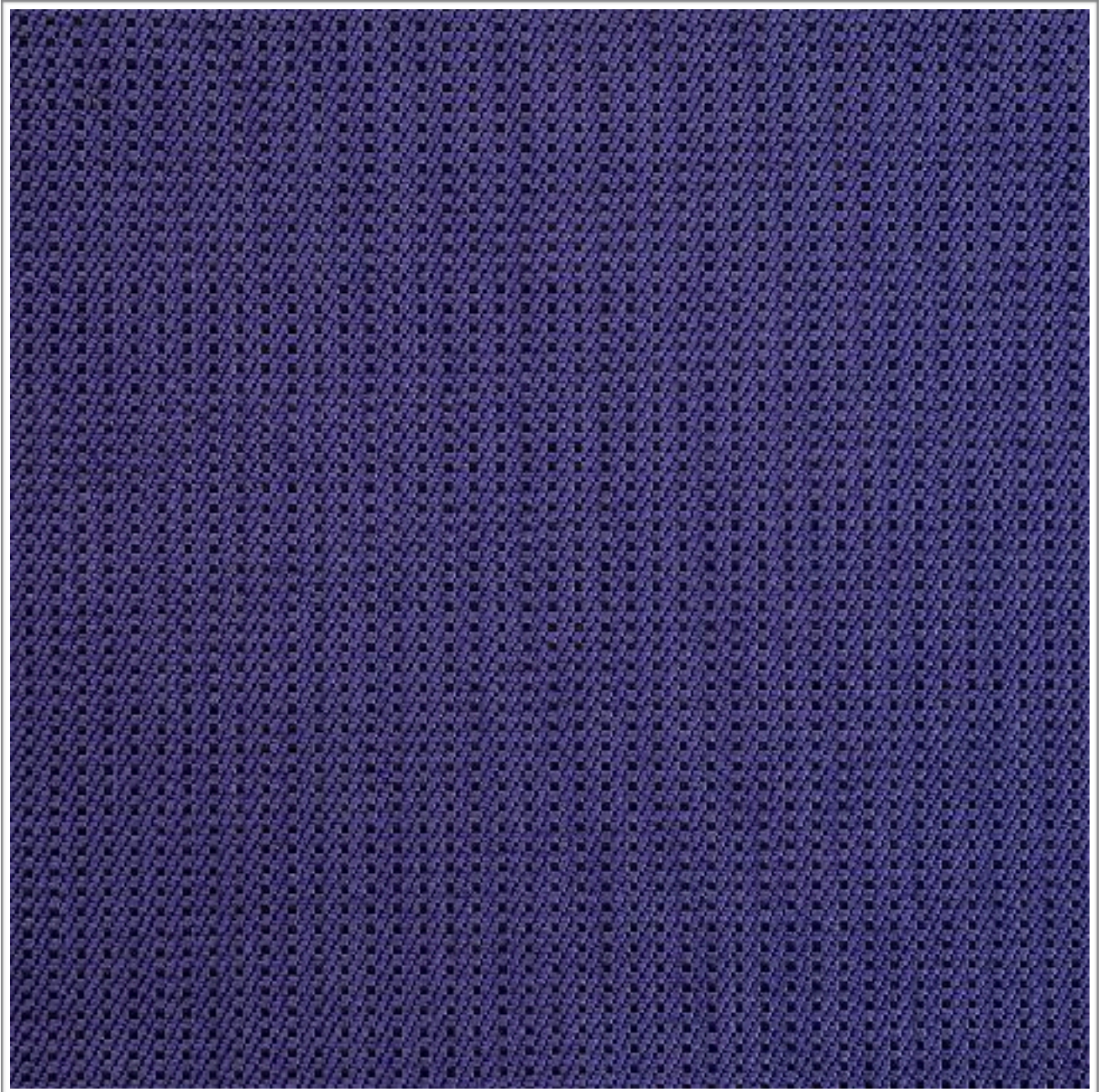


REVOLUTION

IRIS

Weavers
World



Photographic fabric scans are not colour accurate. Always request actual fabric samples before ordering.

SPECIFICATIONS

| | |
|----------------|---|
| Application | Upholstery |
| Composition | 100% Polyester |
| Width | 148cm |
| Mass | 411gm/1m |
| Pattern Repeat | Plain |
| Complies To | SABS 1324 Office Partitions Specification |

| | | STANDARD | REVOLUTION |
|------------------------|------|-----------------------|------------|
| Colour Fastness: | | | |
| To Light | | 6 | +6 |
| To Rubbing Dry | | 4 | 4 |
| To Rubbing Wet | | 4 | 4 |
| Seam Slippage: | Warp | 180N | +180N |
| | Weft | 180N | +180N |
| Tensile Strength: | Warp | 400N | +400N |
| | Weft | 400N | +400N |
| Cleaning Instructions: | | Professional Cleaning | |

NOTE: Refer to SABS 726 - This specification calls for a minimum seam of 15mm and 4-5 stitches per cm.