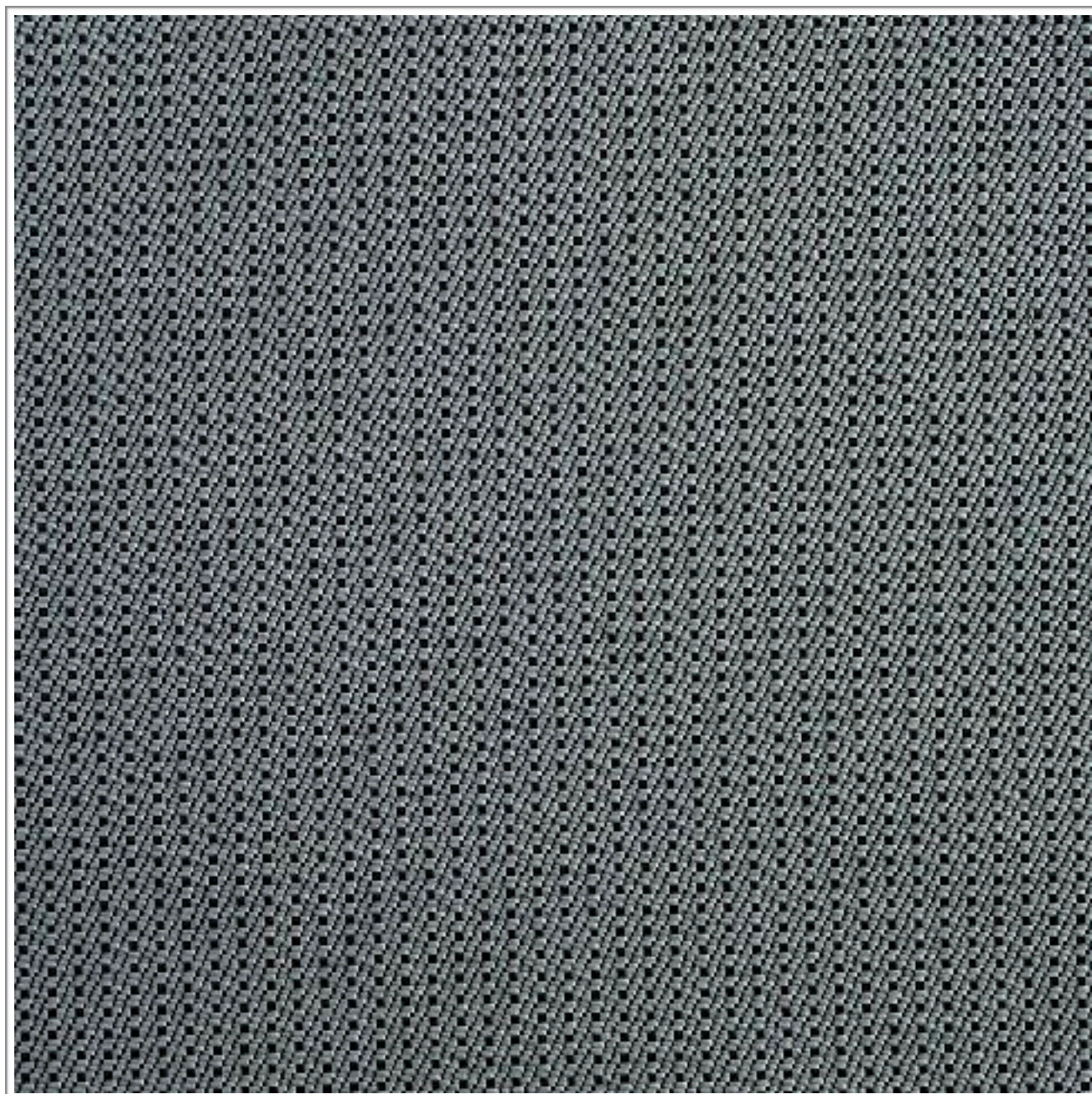


# **REVOLUTION**

## **HUMPHREY**

---

**Weavers**  
**World**



Photographic fabric scans are not colour accurate. Always request actual fabric samples before ordering.

# SPECIFICATIONS

Application	Upholstery
Composition	100% Polyester
Width	148cm
Mass	411gm/1m
Pattern Repeat	Plain
Complies To	SABS 1324 Office Partitions Specification

---

		STANDARD	REVOLUTION
Colour Fastness:			
To Light		6	+6
To Rubbing Dry		4	4
To Rubbing Wet		4	4
Seam Slippage:	Warp	180N	+180N
	Weft	180N	+180N
Tensile Strength:	Warp	400N	+400N
	Weft	400N	+400N
Cleaning Instructions:		Professional Cleaning	

**NOTE:** Refer to SABS 726 - This specification calls for a minimum seam of 15mm and 4-5 stitches per cm.