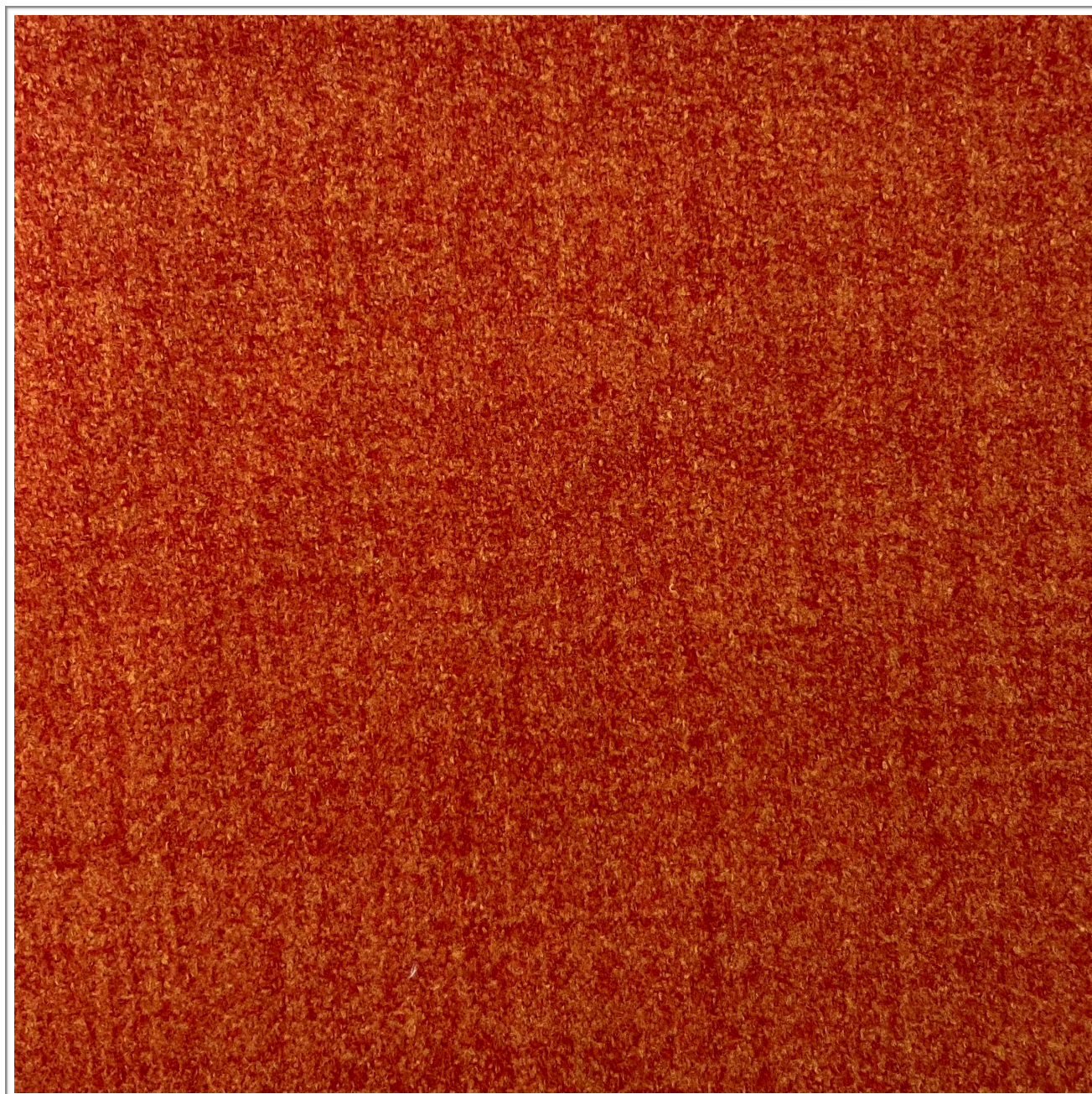


OMNIA
692307

Weavers
World



Photographic fabric scans are not colour accurate. Always request actual fabric samples before ordering.

SPECIFICATIONS

| | | | |
|-----------------------|------|----------------------------------|--------------|
| Application | | Contract Upholstery & Screening | |
| Composition: | | 100% PES | |
| Width | | 142cm | |
| Mass | | 346gm/m² | |
| Complies To | | SABS 1324 Contract Specification | |
| | | | |
| | | STANDARD | OMNIA |
| Abrasion Resistance: | | 25 000 Rubs | +45 000 Rubs |
| Colour Fastness: | | | |
| To Light | | 6 | 5 |
| To Rubbing | | 4 | 4-5 |
| To Dry Cleaning | | 4 | 4 |
| To Perspiration | | 4 | 4 |
| To Pilling | | 4 | 4-5 |
| Seam Slippage: | Warp | 180N | +180N |
| | Weft | 180N | +180N |
| Tensile Strength: | Warp | 400N | 1500N |
| | Weft | 400N | 1055N |
| Cleaning Instructions | | Professional Cleaning | |

NOTE: Refer to SABS 726 - This specification calls for a minimum seam of 15mm and 4-5 stitches per cm.